



Prostatic Acid Phosphatase(PSAP) rabbit mAb(ABT66R)

Catalog No	YP-Ab-15498
Isotype	IgG
Reactivity	Human
Applications	IHC;IF
Gene Name	ACPP
Protein Name	Prostatic Acid Phosphatase(PSAP)
Immunogen	Synthesized peptide derived from human Prostatic Acid Phosphatase(PSAP)
Specificity	This antibody detects endogenous levels of Prostatic Acid Phosphatase(PSAP) at Human
Formulation	Liquid in PBS containing 50% glycerol, 0.5% BSA and 0.02% sodium azide.
Source	Polyclonal, Rabbit,IgG
Purification	The antibody was affinity-purified from Cell supernatant by affinity-chromatography using specific immunogen.
Dilution	IHC-p 1:200. IF 1:50-200
Concentration	1 mg/ml
Purity	≥90%
Storage Stability	-20°C/1 year
Synonyms	Prostatic acid phosphatase (PAP;EC 3.1.3.2;5'-nucleotidase;5'-NT;EC 3.1.3.5;Ecto-5'-nucleotidase;Thiamine monophosphatase;TMPase) [Cleaved into: PAPf39]
Observed Band	
Cell Pathway	[Isoform 1]: Secreted .; [Isoform 2]: Cell membrane ; Single-pass type I membrane protein . Lysosome membrane ; Single-pass type I membrane protein . Nucleus . Cytoplasm, cytosol . Appears to shuttle between the cell membrane and intracellular vesicles. Colocalizes with FLOT1 at cell membrane and in intracellular vesicles (PubMed:17638863). Colocalizes with LAMP2 on the lysosome membrane (PubMed:17897319). .
Tissue Specificity	Highly expressed in the prostate, restricted to glandular and ductal epithelial cells. Also expressed in bladder, kidney, pancreas, lung, cervix, testis and ovary. Weak expression in a subset of pancreatic islet cells, squamous epithelia, the pilosebaceous unit, colonic neuroendocrine cells and skin adnexal structures. Low expression in prostate carcinoma cells and tissues. ; [Isoform 2]: Widely expressed. Expressed in the sarcolemma of skeletal muscle.
Function	catalytic activity:A phosphate monoester + H(2)O = an alcohol + phosphate.;similarity:Belongs to the histidine acid phosphatase family.;subcellular location:Predominantly localized in the plasma membrane but also detected in



intracellular vesicles.,subunit:Homodimer.,

Background

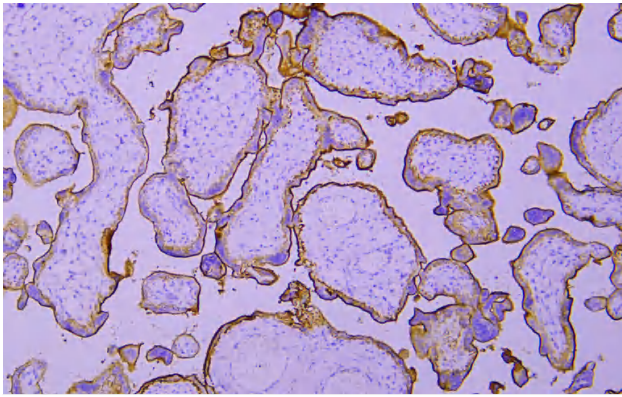
matters needing attention

Avoid repeated freezing and thawing!

Usage suggestions

This product can be used in immunological reaction related experiments. For more information, please consult technical personnel.

Products Images



Immunohistochemical analysis of paraffin-embedded human Placenta. 1, Antibody was incubated at 4° overnight. 2, TRIS-EDTA of pH8.0 was used for antigen retrieval. 3,Secondary antibody was diluted at 1:200(room temperature, 30min).